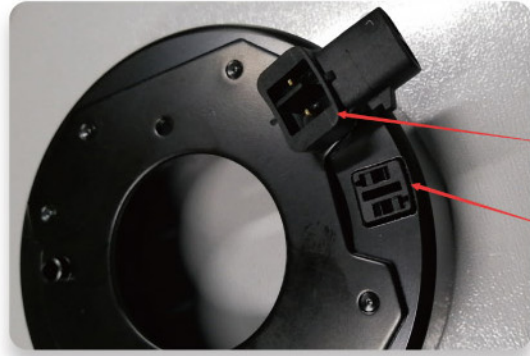


Product application performance

Electronic

Cable potting fixation and waterproof applications



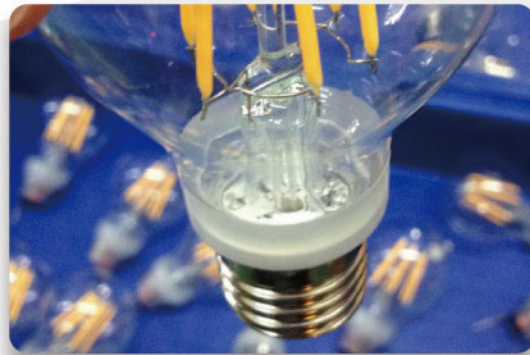
Optics

Sensing components filling, bonding, fixation applications



Illumination

Plastic and metal adhesion applications



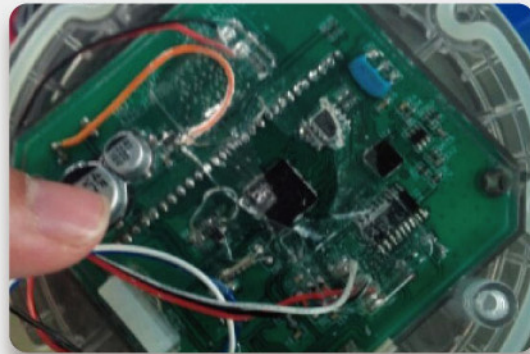
Industry

Passivated metal and plastic bonding applications



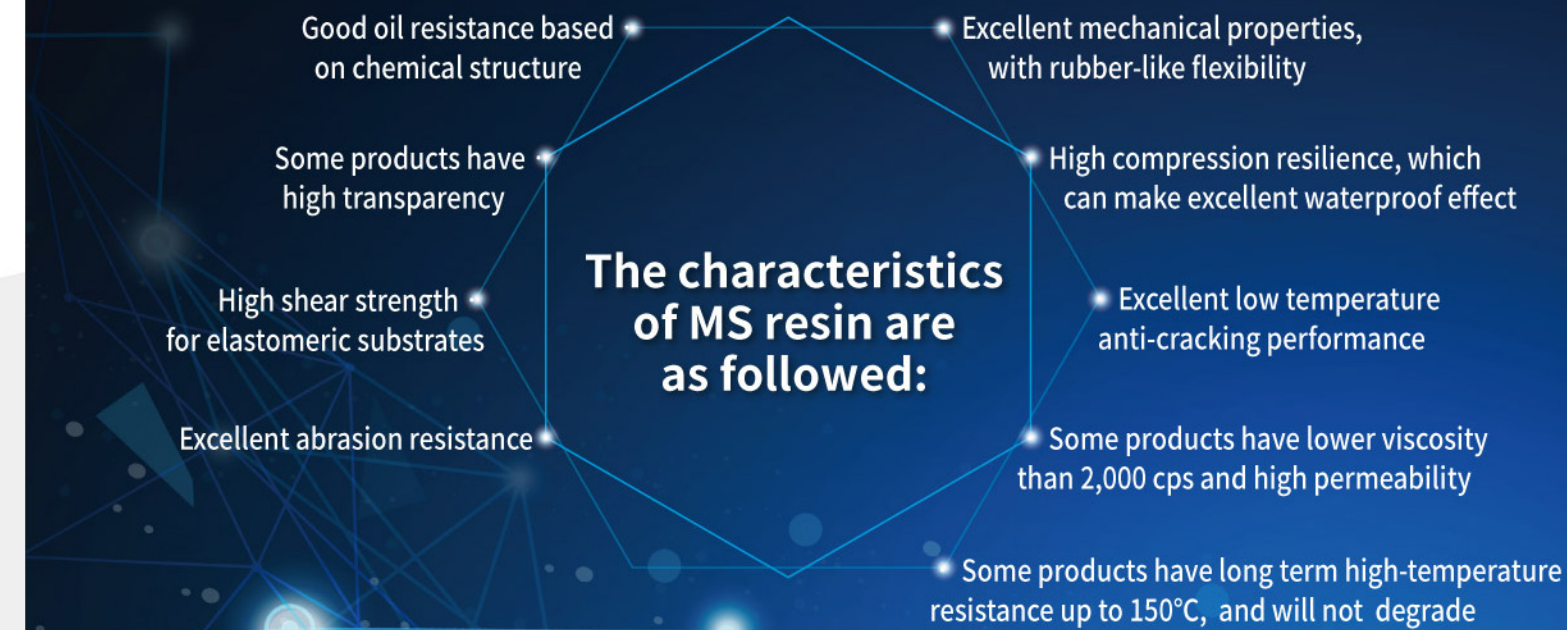
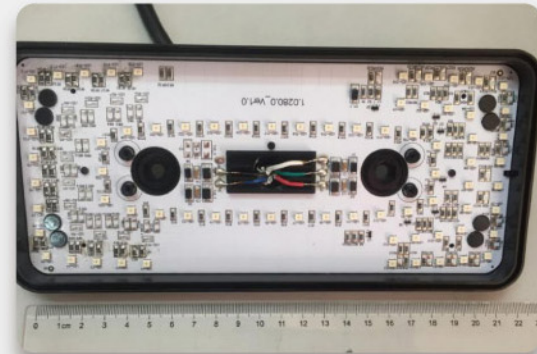
Structure

Smart water meter structural parts waterproof sealing application



Automotive

Waterproof, bonding, and sealing on lighting application



Moisture Curing Modified Silicone Adhesive

www.everwide.com.tw



Product packaging introduction

- 30ml dispensing syringe with aluminum foil bag vacuum packing, 10 pieces/box
- 50ml dispensing syringe with aluminum foil bag vacuum packing, 8 pieces/box
- 135ml laminated tube in carton packing, 30 pieces/box
- 170ml laminated tube in carton packing, 30 pieces/box
- Tin containing, blue label 300ml plastic cartridge packaging, 25 pieces/box
- Non-tin containing, green label 300ml plastic cartridge packaging, 25 pieces/box
- 2,600ml tube packaging, 6 pieces/box
- 20L white straight sided plastic drum
- 30L blue straight sided leakproof iron drum



Storage: Room Temperature
Packaging Specifications: 50/170/300ml
FS211W A/B: 50/200/400ml

Moisture curing modified silicone adhesive

Product feature description:
Moisture curing polyether resin is a new type of adhesive, and it is also one of the ideal fast curing adhesive with high cost-effectiveness. It has three characteristics: pressure-sensitive during bonding, flexible after curing, and environmentally friendly solvent-free formula.

Everwide Chemical developed FS series moisture curing polyether resin (Silane Terminated Polyurethane), mainly for the bonding of plastics, metals and glasses. Different from traditional PU application, isocyanate (NCO) which contains toxic.

General silicone rubber makes users think that the biggest disadvantage is that it is polluting. Its internal components will slowly diffuse to the outside. In civil engineering applications, it will cause pollution to buildings, and in electronic applications, it will cause contacting damage.

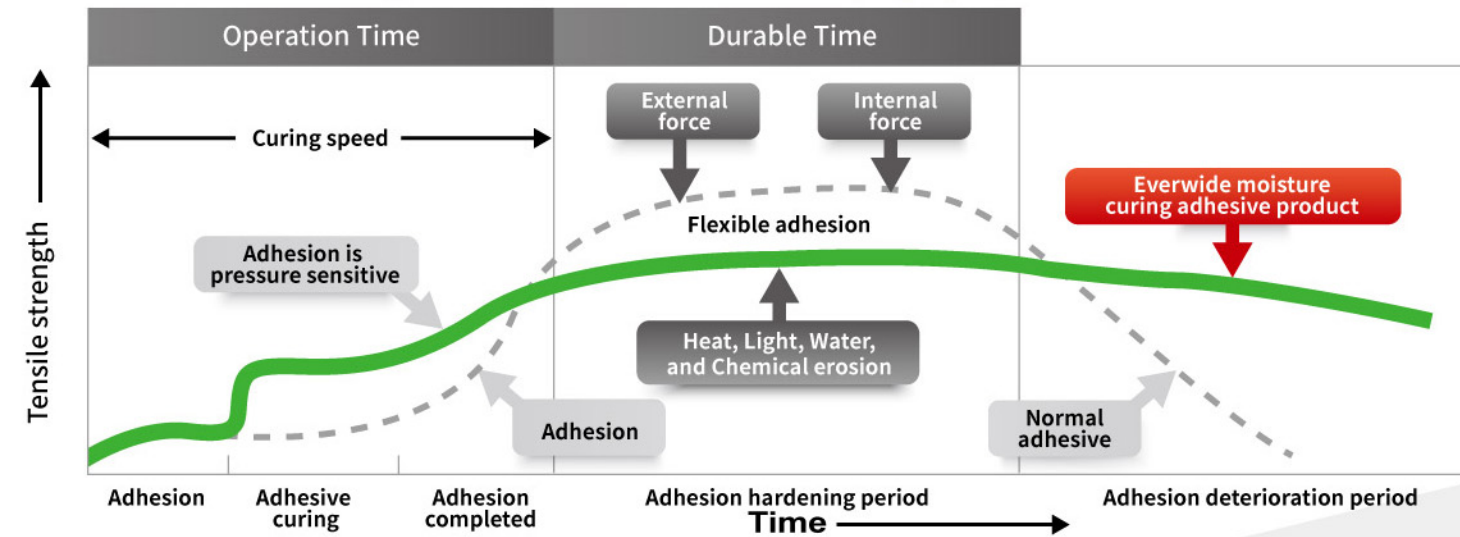
Everwide Chemical regards the development of polyether modified silicone resin series products as the target of research and development. We invests a lot of human resources and material resources on formulation development, product packaging, application range, etc.,

MS resin is a polyether synthetic resin with flexibility, transparency, oil resistance, and abrasion resistance. In terms of technical perspective, they are thermoplastic elastomers consisting of block copolymers with linear polymer chains containing low polarity segments and relatively long soft segments alternating with short, high polar hard segments, linked with covalent bonding.

Moisture curing type, which are impact resistance, toughness, bonding, sealing, reinforcement, and potting application series. All the feature description are as followed :

Non-solvent formula	Solvent-free formula product that cure rapidly at room temperature, providing safety, and easy to use characteristic.
Pressure sensitive as bonding	The curing reaction is carried out after absorbing moisture in the air. After coating the adhesive on the material for 10 min during non-surface drying time, it has a pre-fixation characteristic of pressure-sensitive effect.
Fast surface drying time	The surface drying speed of this product is 5~10 min and it can be completely cured after 6~12 hr. Comparatively, the complete curing time is more faster than organic silicone.
Flexible after curing	The cured product is a thermoplastic elastomer composed of covalently linked block copolymers, so it has both the softness of silicone and the toughness of polyurethane.
Wide range of usage	The products can be applied on various types of thermosetting and thermoplastic plastics material, artificial rubber, silicone rubber, glass, ceramics, different types of metals, and other materials. It can be used for various types of applications.
Durability	The product is strong and tough, it is hard to peel off, resistant to high and low-temperature cycles without cracking and delamination, and it has excellent weather resistance in extreme weather in outdoor environments.

The moisture curing adhesive formulation concept graph



Organic silicone series table

Room Temperature Curing Type	Product No.	Color	Viscosity m.Pas	Surface Dry Time (25°C)/min	Full Curing Time 25°C/days	Hardness (SHORE)	Surface Resistivity (ohm)	Volume Resistivity (ohm-cm)	Shear Strength(kg/cm²)				
									Glass+Glass	SUS+SUS	Al+Al	PC+PC	ABS+ABS
	FX0223	Black	14,750	30	5~7	00 67	2.1*10 ¹²	2.0*10 ¹¹	15	16	-	12	10
	FX027	Colorless	3,000	15	3~5	00 62	2.1*10 ¹²	2.0*10 ¹¹	8	7	-	6	4
	FX112W	White	96,000	5	1~3	00 90	2.1*10 ¹²	2.0*10 ¹¹	9	11	12	7	5
	FX191W3	White	450,000	15	3~5	A30	2.1*10 ¹²	2.0*10 ¹¹	21	14	13	12	10
	FX193	Colorless	30,000	15	3~5	A30	1.0*10 ¹⁵	2.0*10 ¹⁴	31	18	23	13	9
	FX195	Opaque	150,000	15	3~5	A30	-	-	31	28	20	16	6
	FX196W	White	90,000	5	1~3	A50	1.0*10 ¹⁵	2.0*10 ¹⁴	31	18	20	13	9
	FX196W1	White	150,000	3	1~3	A50	1.0*10 ¹⁵	2.0*10 ¹⁴	31	18	20	13	9
	FX196BL	Black	90,000	5	1~3	A50	1.0*10 ¹⁵	2.0*10 ¹⁴	31	18	20	13	9
	FX196BL1	Black	120,000	5	1~3	A55	3.0*10 ¹⁵	3.1*10 ¹⁴	51	48	50	33	29
	FX172W2	White	45,000	Curing Condition 150°C	Curing Time(min) 40	A95	3.0*10 ¹⁵	3.1*10 ¹⁴	51	48	50	33	29
	FX172G	Grey	70,000	Curing Condition 150°C	Curing Time(min) 40	A95	3.0*10 ¹⁵	3.1*10 ¹⁴	51	48	50	33	29
	FX172G1	Grey	45,000	Curing Condition 150°C	Curing Time(min) 40	A95	3.0*10 ¹⁵	3.1*10 ¹⁴	51	48	50	33	29

Storage: Room Temperature
Packaging Specifications: 50/170/300ml

Modified silicone series table

Tin-Containing Colorless Type	Product No.	Color	Viscosity m.Pas	Surface Dry Time (25°C)/min	Full Curing Time 25°C/days	Hardness (SHORE)	Surface Resistivity (ohm)	Volume Resistivity (ohm-cm)	Shear Strength(kg/cm²)				
									Glass+Glass	SUS+SUS	Al+Al	PC+PC	ABS+ABS
	FS179-6	Colorless	1,500	5	1~3	A50	3.80*10 ¹³	3.86*10 ¹²	38	67	42	44	12
	FS1381	Colorless	7,500	3	1~3	A40	2.1*10 ¹²	2.2*10 ¹¹	-	18	25	20	18
	FS1443-7	Colorless	10,000	2~3	1~3	A30	2.1*10 ¹²	2.3*10 ¹¹	10	30	23	29	16
	FS1442	Colorless	29,000	7	1~3	A40	2.0*10 ¹²	2.2*10 ¹¹	-	37	39	31	15
	FS115	Colorless	47,500	29	5~7	A43	6.4*10 ¹³	5.0*10 ¹¹	-	30	26	13	7
	FS1371	Colorless	60,000	5	1~3	A38	2.0*10 ¹²	2.2*10 ¹¹	8	18	25	23	9
	FS180-8	Colorless	95,000	12	3~5	A34	1.04*10 ¹³	1.84*10 ¹¹	28	42	37	38	11
	FS180-14	Colorless	110,000	5	1~3	A34	1.8*10 ¹⁴	1.1*10 ¹³	28	42	37	38	11
	FS332-40	Colorless	850	10	3~5	A66	3.84*10 ¹³	3.89*10 ¹²	21	30	26	26	15
	FS132-96	Colorless	1,500	10	3~5	A50	3.80*10 ¹³	3.86*10 ¹²	38	67	42	44	12
	FS132-23	Colorless	2,500	13-16	3~5	A69	3.9*10 ¹⁴	1.5*10 ¹³	20	54	46	49	19
	FS132-49	Colorless	3,500	6	1~3	A35	3.12*10 ¹⁰	1.64*10 ⁹	28	25	12	4	8
	FS132-81	Colorless	7,500	5~7	1~3	A33	2.5*10 ¹²	2.5*10 ¹¹	20	32	36	32	15
	FS332-77	Colorless	10,000	3.5	1~3	A47	2.2*10 ¹²	2.3*10 ¹¹	14	28	23	32	18
	FS1326	Colorless	15,000	15	3~5	A35	3.12*10 ¹⁰	1.64*10 ⁹	22	27	12	4	6
	FS132-42	Colorless	35,000	7	1~3	A40	2.0*10 ¹²	2.2*10 ¹¹	9	37	39	31	15
	FS132-32	Colorless	37,500	10-15	3~5	A31	1.3*10 ¹³	1.8*10 ¹³	-	-	26	-	-
	FS132-35	Colorless	47,500	25	5~7	A38	5.8*10 ¹³	5.5*10 ¹¹	-	38	26	29	15
	FS132-51	Colorless	62,500	11	3~5	A57	-	-	-	-	46	14	14
	FS132-18	Colorless	120,000	10	3~5	A43	6.3*10 ¹³	5.1*10 ¹¹	11	30	23	14	10

Storage: Room Temperature
Packaging Specifications: 50/170/300ml

Tin-Containing Black Color Type	Product No.	Color	Viscosity m.Pas	Surface Dry Time (25°C)/min	Full Curing Time 25°C/days	Hardness (SHORE)	Surface Resistivity (ohm)	Volume Resistivity (ohm-cm)	Shear Strength(kg/cm²)				
									Glass+Glass	SUS+SUS	Al+Al	PC+PC	ABS+ABS
	FS0664BL	Black	7,500	5	1~3	A30	2.1*10 ¹²	2.2*10 ¹¹	-	18	25	20	15
	FS100BL5	Black	22,000	10	3~5	A40	-	-	-	-	-	26	9
	FS100BL2	Black	45,000	5	1~3	A31	3.8*10 ¹²	5.0*10 ¹¹	10	30	23	29	16
	FS1443BL8	Black	37,500	3	1~3	A40	2.1*10 ¹²	2.3*10 ¹¹	10	30	23	29	16
	FS215BL	Black	70,000	7	1~3	A40	3.5*10 ¹²	1.0*10 ¹¹	25	34	36	30	9
	FS115BL3	Black	70,000	7	1~3	A40	3.5*10 ¹²	1.0*10 ¹¹	-	34	36	30	9
	FS100BL1	Black	100,000	7	1~3	A41	1.8*10 ¹²	2.0*10 ¹¹	-	35	38	25	20
	FS180-6BL	Black	125,000	7	1~3	A80	3.02*10 ¹²	3.03*10 ¹¹	38	36	38	32	33
	FS332BL40	Black	850	10	3~5	A50	3.80*10 ¹³	3.86*10 ¹²	38	67	42	44	12
	FS132BL57	Black	2,500	14-18	3~5	A40	1.3*10 ¹²	5.0*10 ¹¹	20	23	38	47	17
	FS332BL64	Black	7,500	5	1~3	A33	2.5*10 ¹²	2.5*10 ¹¹	-	32	36	32	15
	FS132BL79	Black	15,500	7	1~3	A80	3.02*10 ¹²	3.05*10 ¹¹	38	52	55	47	33
	FS332BL5	Black	22,000	10	3~5	A40	2.0*10 ¹²	2.1*10 ¹¹	36	34	32	26	9
	FS332BL2	Black	45,000	7	1~3	A34	4.0*10 ¹²	5.5*10 ¹¹	30	25	30	26	15
	FS332BL77	Black	75,000	3	1~3	A53	2.2*10 ¹²	2.4*10 ¹¹	10	32	36	44	12
	FS132BL75	Black	60,000	7	1~3	A65	3.0*10 ¹²	1.0*10 ¹¹	38	52	55	47	33
	FS132BL4	Black	60,000	7	1~3	A42	1.3*10 ¹²	5.0*10 ¹¹	-	26	29	21	9
	FS332BL1	Black	100,000	7	1~3	A57	1.9*10 ¹²	2.1*10 ¹¹	-	25	38	31	20
	FS132BL13	Black	110,000	5	1~3	-	1.0*10 ¹²	1.1*10 ¹¹	-	29	14	35	10
	FS332BL10	Black	77,000	8	1~3	A62	-	-	-	-	-	36	19
	FS332BL8	Black	150,000	10	3~5	A48	1.9*10 ¹²	2.0*10 ¹¹	29	27	30	15	8.9
	FS332BL6	Black	575,000	5	1~3	A50	1.9*10 ¹²	2.0*10 ¹¹	25	26	27	13	9
	FS115W1	White	31,000	5	1~3	A44	-	-	26	27	33	12	8
	FS115W2	White	125,000	7	1~3	A41	1.8*10 ¹²	2.0*10 ¹¹	-	29	30	16	11
	FS100W	White	120,000	11	3~5	A38	-	-	-	30	35	24	21
	FS132W16	White	8,000	8	1~3	A40	-	-	-	33	32	37	20
	FS132W79	White	14,000	7	1~3	A80	3.02*10 ¹²	3.05*10 ¹¹	38	52	55	47	33
	FS132W35	White	47,500	25	5~7	A38	5.8*10 ¹³	5.5*10 ¹¹	-	38	26	29	15
	FS1443W8	White	37,500	3	1~3	A30	-	-	-	30	26	38	-
	FS332W77	White	52,500	3.5	1~3	A70	2.9*10 ¹³	1.9*10 ¹²	-	32	36	44	12
	FS332W80	White	75,000	7	3~5	A45	3.80*10 ¹²	3.86*10 ¹¹	38	9	32	30	13
	FS332W6	White	575,000	5	3~5	A75	1.9*10 ¹²	2.0*10 ¹¹	25	26	27	13	9
	FS100G2	Grey	31,000	4	1~3	A47	1.8*10 ¹²	2.0*10 ¹¹	29	34	42	26	15
	FS115G9	Grey	70,000	7	3~5	A40	3.5*10 ¹²	1.0*10 ¹¹	-	34	36	30	9
	FS100G	Grey	95,000	7	3~5	A42	1.9*10 ¹²	2.0*10 ¹¹	-	33	44	25	14
	FS132G3	Grey	16,000	10	3~5	A28	-	-	-	-	-	-	-
	FS132G31	Grey	17,000	5	3~5	A28	2.2*10 ¹²	2.0*10 ¹¹	-	36	33	26	16
	FS332G80	Grey	75,000	7	1~3	A45	3.80*10 ¹²	3.86*10 ¹¹	38	38	32	30	13
	FS132BE79	Blue	15,500	7	1~3	A69	1.8*10 ¹²	2.0*10 ¹¹	-	52	67	48	21
	FS132BE89	Blue	30,000	7	1~3	A68	1.8*10 ¹²	2.0*10 ¹¹	-	63	71	50	32
	FS143	Red	400,000	3	1~3	A78	5.1*10 ¹⁴	5.2*10 ¹²	-	16	18	14	11
	FS143R2	Red	150,000	3	1~3	A73	5.1*10 ¹⁴	5.2*10 ¹²	-	16	18	14	11
	FS143R3	Red	75,000	3	1~3	A70	5.1*10 ¹⁴	5.2*10 ¹²	-	16	18	14	11
	FS168W70	Black	150,000	7	1~3	A69	-	-	-	29	31	19	17
	FS168W11	Black	50,000	7	1~3	A80	1.02*10 ¹²	1.03*10 ¹¹	27	36	28		